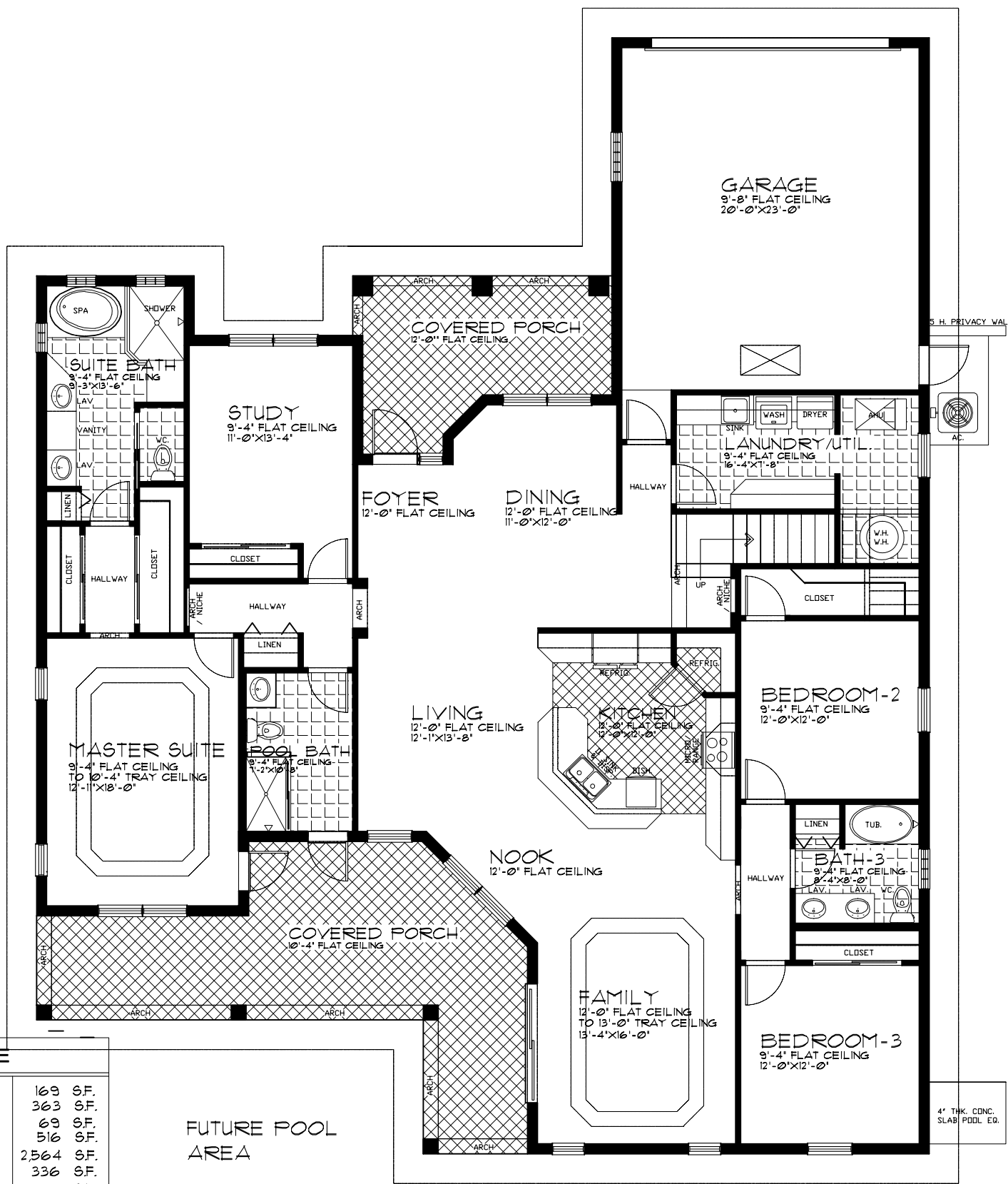


"THE CLEAR CREEK MODEL"  
 TURTLE CREEK SUBDIVISION  
 LOT 24



SQUARE FOOTAGE

FRONT PORCH	169 S.F.
REAR PORCH	363 S.F.
SECOND FLOOR PORCH	69 S.F.
GARAGE	516 S.F.
FIRST FLOOR LIVING AREA	2,564 S.F.
SECOND FLOOR LIVING AREA	336 S.F.
TOTAL LIVING AREA	2,900 S.F.
GRAND TOTAL	4,011 S.F.

FUTURE POOL AREA

FIRST FLOOR PLAN



**C. A. G.**  
**Caribeño**  
**Architectural**  
**Group, Inc.**

www.cag-architects.com

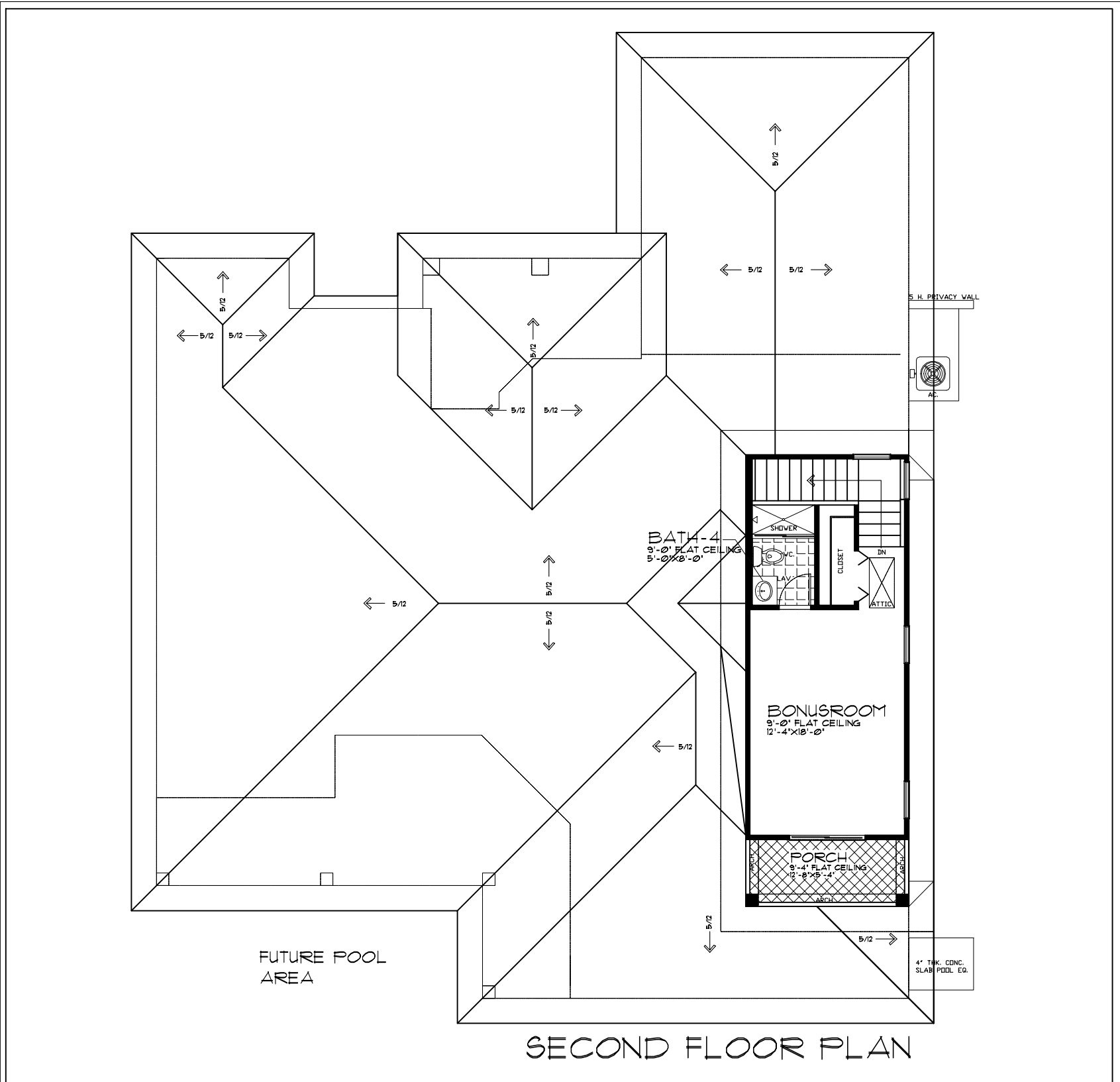
PLANS AND ELEVATIONS ARE ARTIST'S RENDERING AND MAY CONTAIN OPTIONS, WHICH ARE NOT STANDARD ON ALL MODELS. SPRINGWATER HOMES OF FLORIDA, INC. RESERVES THE RIGHT TO MAKE CHANGES TO THESE FLOOR PLANS. THE SPECIFICATIONS, DIMENSIONS AND SQUARE FOOTAGE INFORMATION IS APPROXIMATE AND SHOULD NOT BE USED AS REPRESENTATION OF THE HOME'S PRECISE OR ACTUAL SIZE. ANY STATEMENT, VERBAL OR WRITTEN, REGARDING "UNDER AIR" OR "FINISHED AREA" ON ANY HOME IS A SHORTHAND DESCRIPTION OF THE MANNER IN WHICH THE SQUARE FOOTAGE WAS ESTIMATED AND SHOULD NOT BE CONSTRUED TO INDICATE CERTAINTY.



**SPRINGWATER HOMES**

E-mail: springwaterhomes@yahoo.com

"THE CLEAR CREEK MODEL"  
 TURTLE CREEK SUBDIVISION  
 LOT 24



SECOND FLOOR PLAN



**C. A. G.**  
 Caribeño  
 Architectural  
 Group, Inc.

www.cag-architects.com

PLANS AND ELEVATIONS ARE ARTIST'S RENDERING AND MAY CONTAIN OPTIONS, WHICH ARE NOT STANDARD ON ALL MODELS. SPRINGWATER HOMES OF FLORIDA, INC. RESERVES THE RIGHT TO MAKE CHANGES TO THESE FLOOR PLANS. THE SPECIFICATIONS, DIMENSIONS AND SQUARE FOOTAGE INFORMATION IS APPROXIMATE AND SHOULD NOT BE USED AS REPRESENTATION OF THE HOME'S PRECISE OR ACTUAL SIZE. ANY STATEMENT, VERBAL OR WRITTEN, REGARDING 'UNDER AIR' OR 'FINISHED AREA' ON ANY HOME IS A SHORTHAND DESCRIPTION OF THE MANNER IN WHICH THE SQUARE FOOTAGE WAS ESTIMATED AND SHOULD NOT BE CONSTRUED TO INDICATE CERTAINTY.



**SPRINGWATER HOMES**

E-mail: springwaterhomes@yahoo.com